

# Installing Add-On Libraries

## For Windows 7 & 8

### Some quick tips before installing any of the Add-On Libraries:

1. Make sure that you have installed the Fabric Studio main program and that you are familiar with how the program works. It is highly recommended that you review the videos on the Resource page of the website before you begin this process.
2. Become familiar with where your programs are installed on your computer's hard drive. If you have multiple hard drives, know which drive your computer automatically installs your program files on.
3. You will need to know how to access your program files, I like to use Explorer but that is up to you. Both Windows 7 & 8 also use Explorer, they are just accessed a little differently.

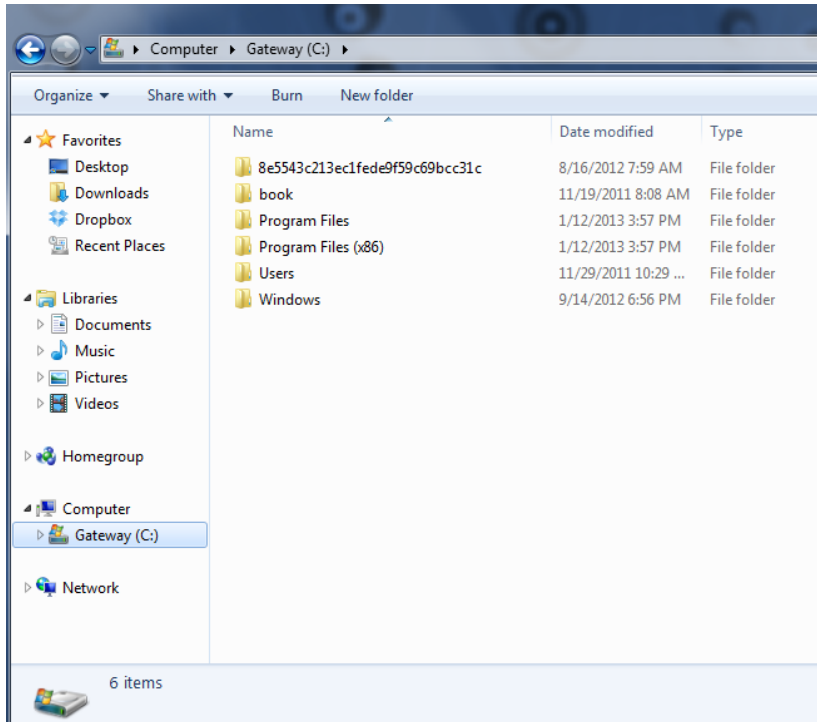
We are currently changing over the installation procedures for both Windows 7 & 8 operating systems. Some of the Libraries will install directly into the Sample Library root, and some will still need to be moved into the sub directory through cut and paste. Hopefully within the next year all Add-On Libraries will install directly, and no additional steps will be necessary.

### Installing your new CD:

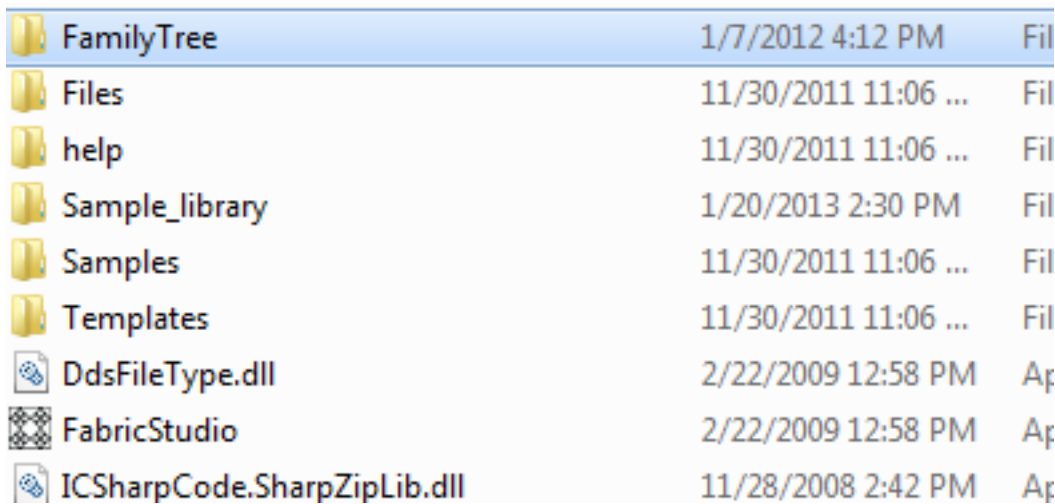
1. Place CD in CD-ROM drive and follow the Auto Install Wizard. Your new CD Library will automatically install into the FabricStudio Program File Directory. I will be using the Family Tree Library as an example throughout this document.
2. During the installation you will be given the option of installing the CD elsewhere. If you are not sure about how to locate your Program Files or how to use Explorer, go ahead and select a place on your computer that you feel most comfortable working with. For example, you may want to install it on your Desktop or perhaps My Documents instead.
3. Once the CD has completed its installation you will need to move the new library into the Sample Library folder within the Program File. Here's how to get started:
  - a. Right click on your Windows icon to access Windows Explorer:



b. After you open Windows Explorer, look on the left side of the screen and click on the drive where your files are located (usually Drive C). Look for a folder called Program Files (x86) and click on it. All of the Windows 7 & 8 programs that you have installed on that drive will appear.



c. Locate FabricStudio folder and click on it to open folder. Notice that your new FamilyTree library is there.

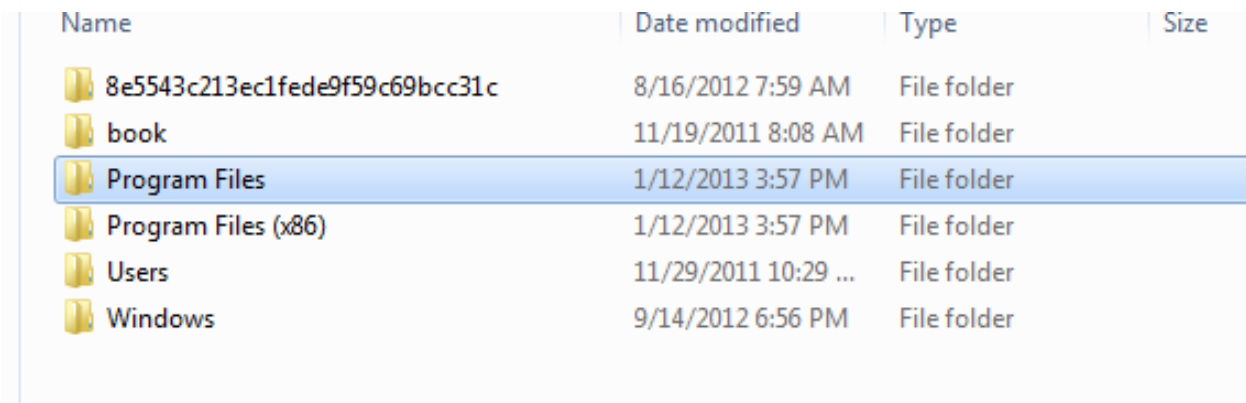


d. Now you will place the new Family Tree folder into the Sample\_library by either dragging the FamilyTree Folder or cutting and pasting it as shown below. They both have the same result, so pick the method with which you are most familiar.

To verify that you have properly installed the Family Tree library into the Sample\_library, just click on the Sample\_library folder and you should see the FamilyTree folder.

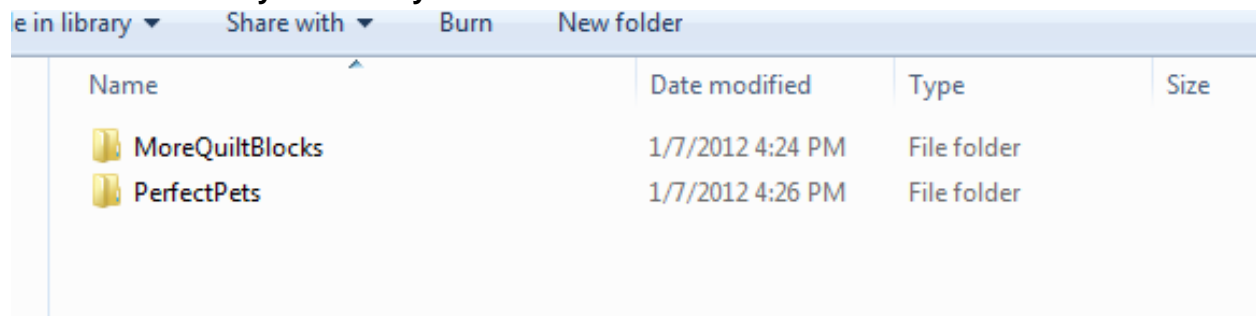
Please note that three of our older CDs (“More Quilt Blocks”, “Perfect Pets” and “Fabric Scrapper Library”) sometimes install in a separate folder of Program Files (see image below.) However, we recommend that you first look in the Program Files(x86) FabricStudio Folder to see if they are there instead. If the library files do not appear in that file, then follow this alternate procedure for completing your installation.

To access these three Libraries you will first click on Program Files, and then locate the FabricStudio and click on it to open.



| Name                           | Date modified        | Type        | Size |
|--------------------------------|----------------------|-------------|------|
| 8e5543c213ec1fede9f59c69bcc31c | 8/16/2012 7:59 AM    | File folder |      |
| book                           | 11/19/2011 8:08 AM   | File folder |      |
| Program Files                  | 1/12/2013 3:57 PM    | File folder |      |
| Program Files (x86)            | 1/12/2013 3:57 PM    | File folder |      |
| Users                          | 11/29/2011 10:29 ... | File folder |      |
| Windows                        | 9/14/2012 6:56 PM    | File folder |      |

You will then see your Library folders similar to those shown below:

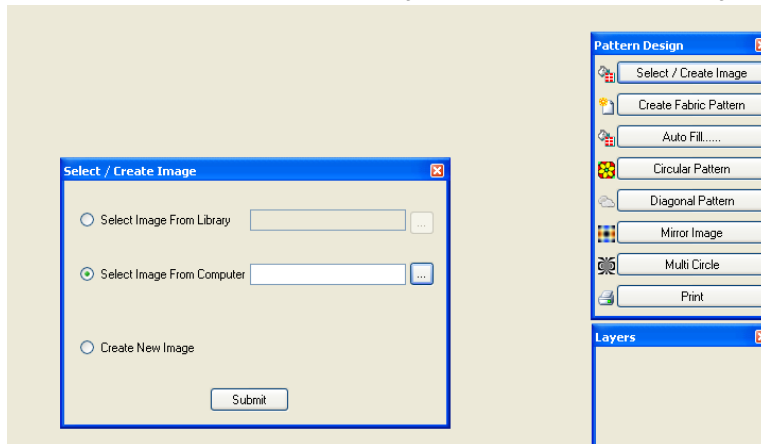


| Name            | Date modified    | Type        | Size |
|-----------------|------------------|-------------|------|
| MoreQuiltBlocks | 1/7/2012 4:24 PM | File folder |      |
| PerfectPets     | 1/7/2012 4:26 PM | File folder |      |

You will then need to either Copy/Paste or Cut/Paste each Folder, and place them into the Program Files(x86)/Fabric Studio/Sample\_library.

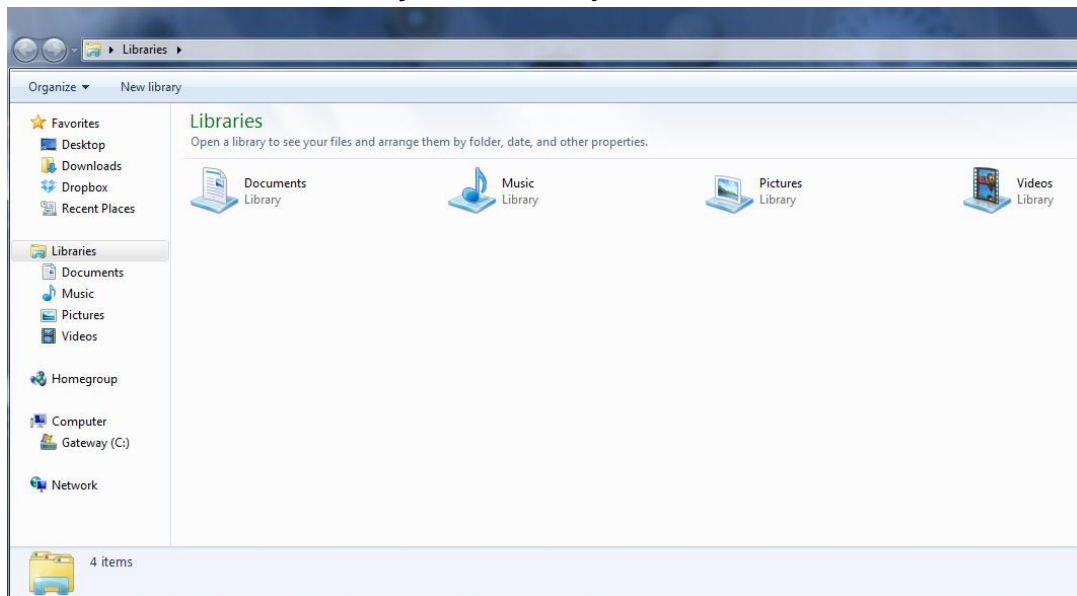
If you chose to install the Family Tree Library elsewhere, you will need to access the Library one of two ways. First, you can use the File/Open/Image command within the software. Second, you can access it through the Pattern Design Box within the software by first clicking on Select/Create Image, then click on Select Image From Computer, and

then locate the folder where you installed the library on your Computer.

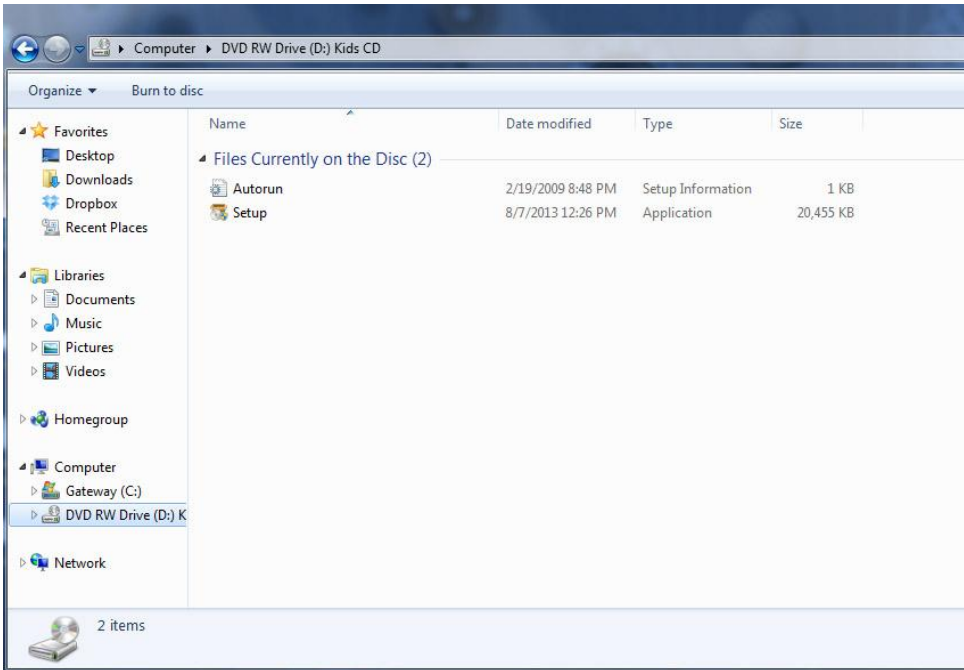


**Manual Installation:** If the Setup Wizard does not appear follow the instructions below.

1. Place the CD in the CD-ROM/DVD Drive.
2. Click on folder in bottom tray to view computer drives. This is how it should look.



3. Click on the CD-ROM drive and you will see two files. One file is Autorun and the other is Setup. Click on Setup.



4. A new screen will appear: select Run setup.exe.



5. You will be asked to give permission to install an unknown Publisher, click yes; you will then proceed with the Install Wizard to complete the installation process.

